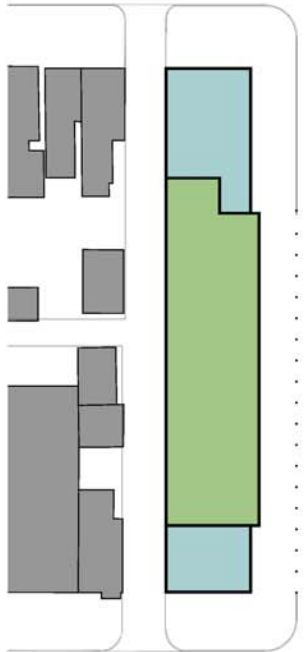


8TH STREET



C STREET



7TH STREET

PENNSYLVANIA AVENUE

**HEIGHT FROM TOP OF CURB
AT THE MIDDLE OF THE
BUILDING PORTION TO THE
CEILING OF THE TOP STORY**

COLOR LEGEND

- 40' or less (R4 Zoning Height)
- 41' to 50'
- 51' to 60'
- 61' to 70'
- 71' to 80'
- 81' to 85'

Note: Mechanical Penthouses are not shown